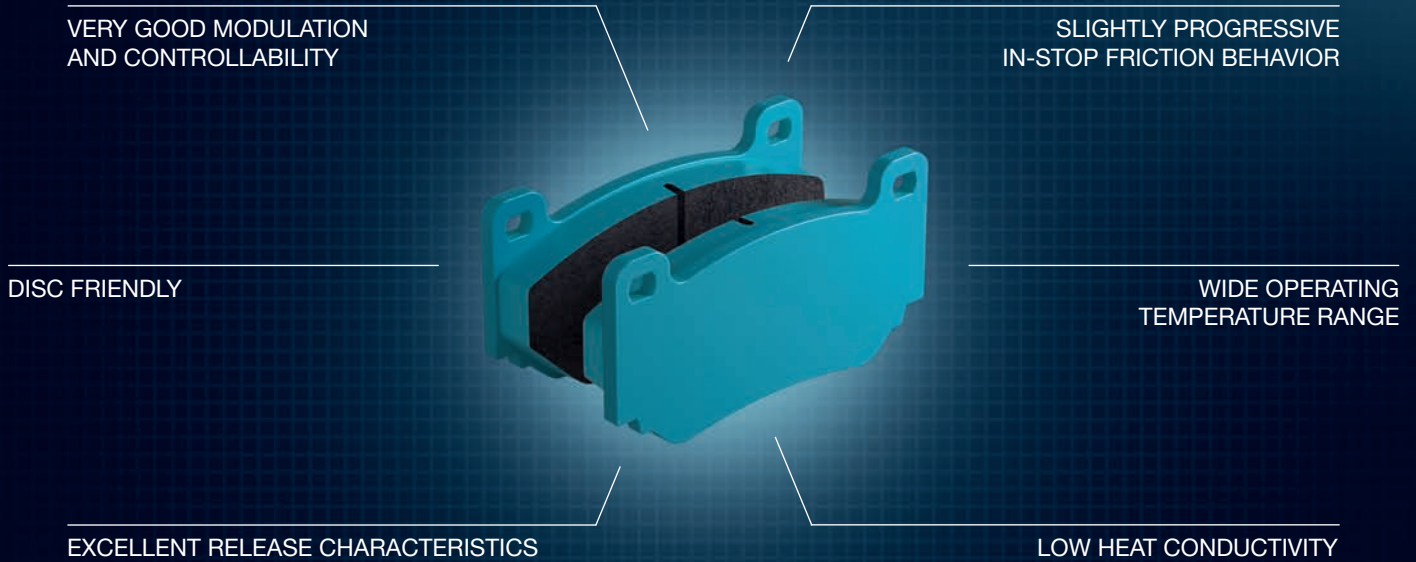


RACING BRAKE PADS FOR HISTORIC CARS

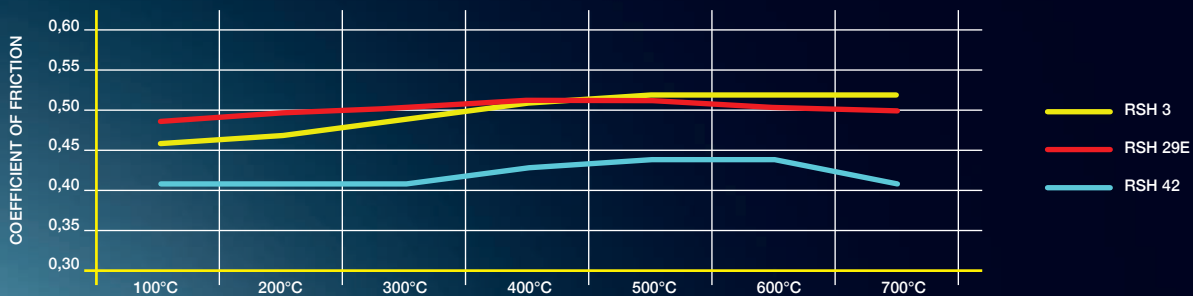


## AVAILABLE RSH RACING BRAKE PAD COMPOUNDS

RSH 3	RSH 29E	RSH 42
-------	---------	--------

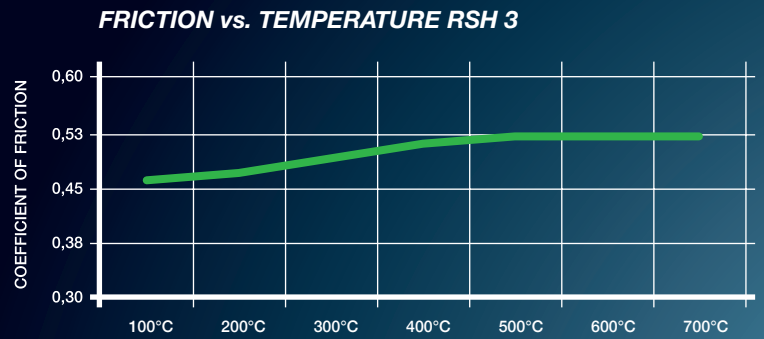
The available specifications can be found in the product search on our website: [www.pagidracing.com](http://www.pagidracing.com). PAGID Racing RSH compounds are developed to comply with the latest requirements in historic racing and meet or surpass all current ecological standards of the automotive industry. Available model years in the extensive application range starts in the late 50s and goes up to the 90s.

## FRICTION vs. TEMPERATURE RSH





- + HIGH FRICTION COEFFICIENT**
- + LOW THERMAL CONDUCTIVITY**
- + FADE RESISTANT UP TO 800°C**
- + CONSISTENTLY FIRM PEDAL AT ALL TEMPERATURES**



**APPLICATION RANGE**

Useable for Rally, GT and Touring cars for circuit racing and also for club racing.

**DESCRIPTION**

The RSH 3 is an organic compound optimized for sprint races with historic cars. Due to the perfect combination of the main characteristics we can offer a wide application range. It captivates with its high initial bite and excellent modulation and release characteristics.

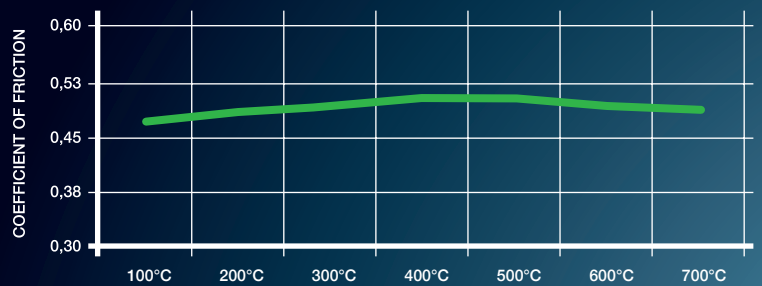




- + MEDIUM TO HIGH FRICTION COEFFICIENT
- + VERY GOOD THERMAL STABILITY
- + LOW PEDAL EFFORT
- + SLIGHTLY PROGRESSIVE IN-STOP BEHAVIOR AND GOOD MODULATION
- + LONG PAD AND DISC LIFE



FRICITION vs. TEMPERATURE RSH 29E



### APPLICATION RANGE

Typical purposes are GT and Touring cars in endurance races. Due to its friction level you can also use it in sprint races as well.

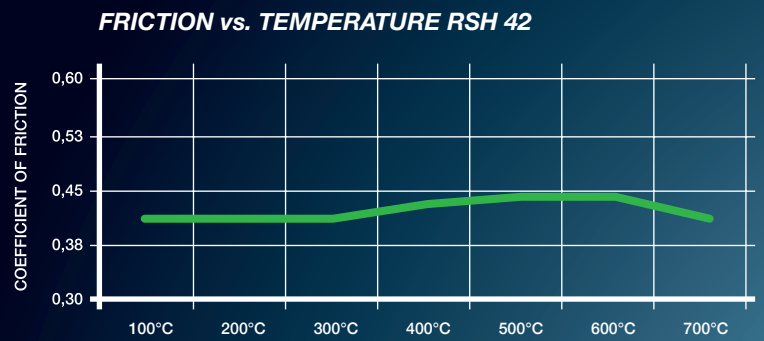
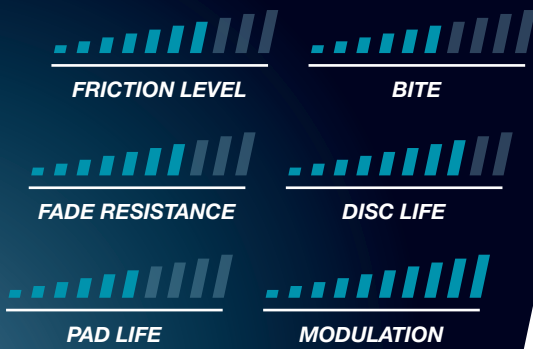
### DESCRIPTION

The RSH 29E is excellent for endurance racing with historic cars. It convinces with its long pad and disc life and requires less pedal effort during the race. A further advantage is the constant friction level over a wide range of temperatures.





- + LOW TO MEDIUM FRICTION COEFFICIENT**
- + GOOD COLD FRICTION**
- + IMMEDIATE LOW TEMPERATURE RESPONSE**
- + VERY EASY BEDDING PROCESS**



**APPLICATION RANGE**

An excellent classic rally pad which is also very popular in small formula cars.

**DESCRIPTION**

The characteristics of RSH 42 make this material appropriate for small formula cars. Furthermore, you can use it as rear axle compound in combination with the RSH 29E on the front axle.

